

KSDNA PRESENTATION

Ladies and Gentlemen, Friends, Good afternoon. Kevin thank you for giving KSDNA the opportunity of speaking for a few minutes at your AGM.

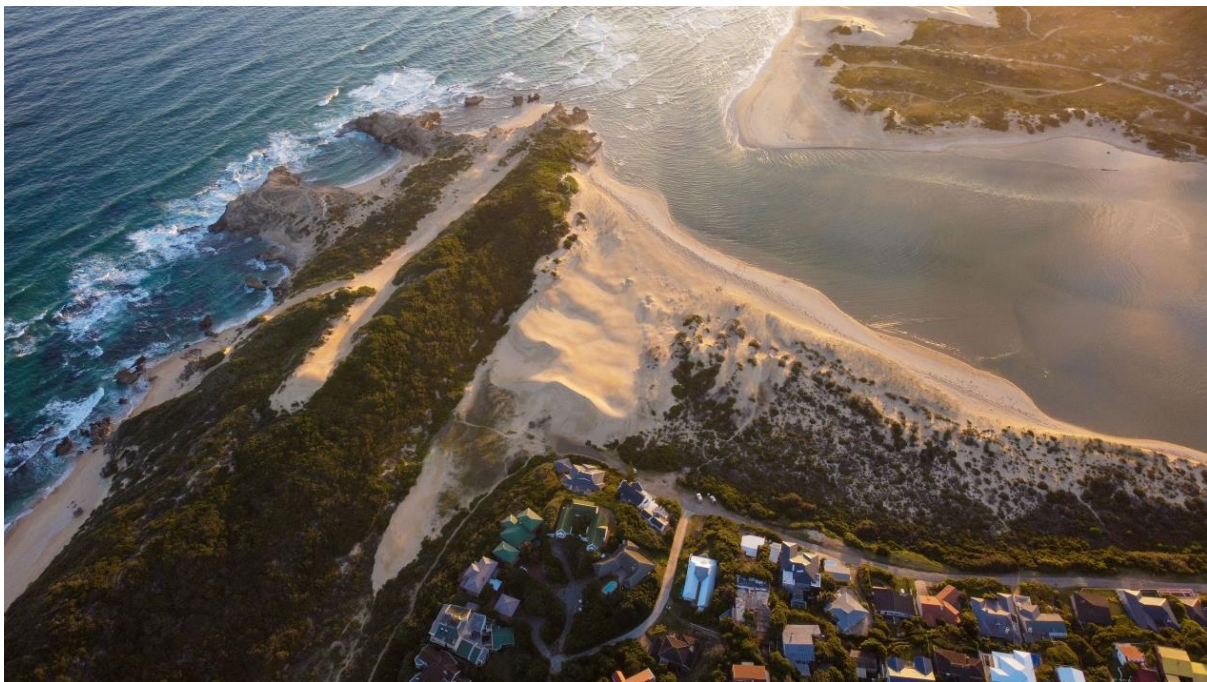
This cannot be a presentation on the Sand Dune Project but I will cover the important issues. Please see the Website which covers everything and we welcome your questions.

KSDA were asked by the Ndlambe Municipal Manager and Chair of Estuary Care in January 2016, to find and fund the best Coastal Engineers, to investigate the Bushman's Silting River problem. They did an excellent job of this and I asked them to also look at the ideas put forward by 'informed' residents, which they did regarding Dry Bones Valley, as well as looking into tidal flooding etc. **THE BEST SOLUTION IS WHAT OUR COMMUNITIES MUST IMPLEMENT.**

They completed their full report in September 2016 and presented this to the Bushmans/Kenton communities. The proposal made it clear that the best solution for the Silting River was dredging. The solution for the Sand Dune was more complicated and opening up DBV was not an option which would work.

A presentation was made by PRDW at KOSRA's December 2016 AGM. I was asked at subsequent AGMs about progress and I kept both Chairmen (KOSRA & EC) advised. I had to report that we had not yet found the right solution for the sand dune despite much effort.

Special Rates was necessary for the dredging. Other solutions for the Sand Dune had to be investigated and we did this during the next 3 years.



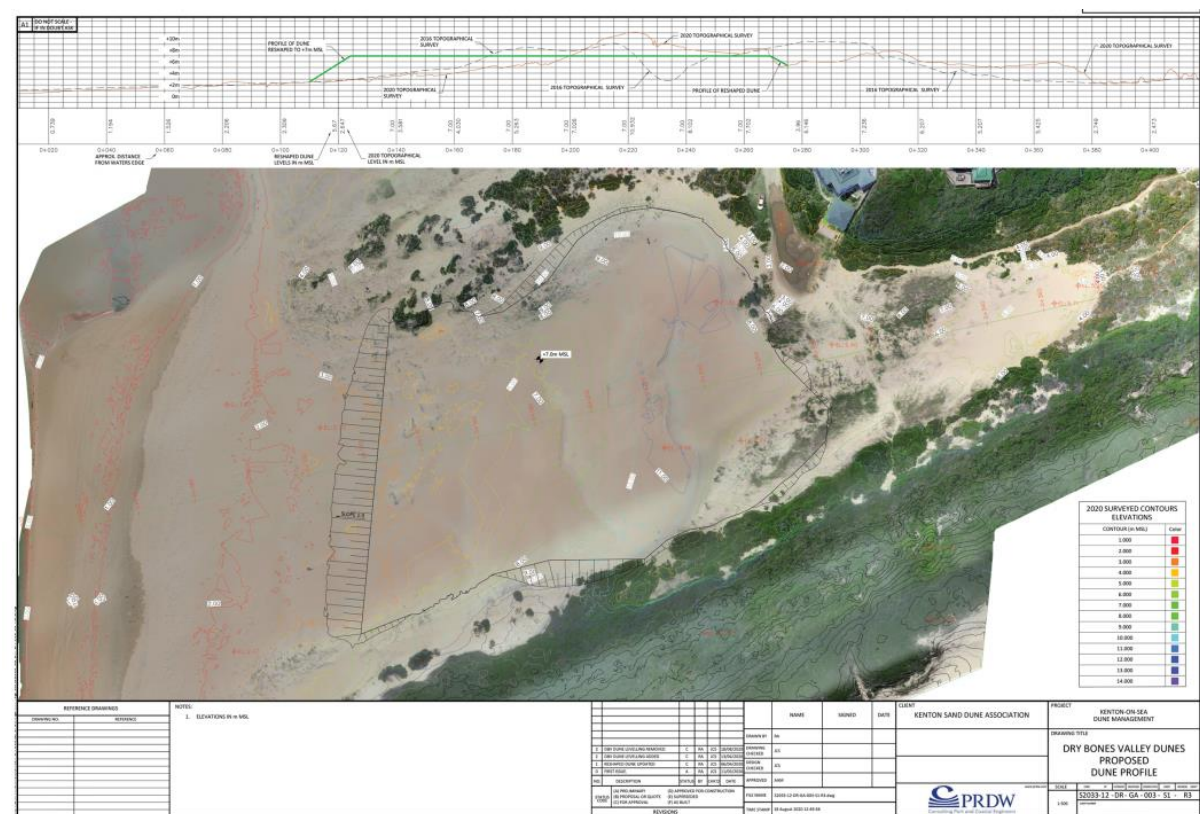
Whilst we continued to try to find the best solution with the Consultants and with Johan de Wet from the Council, the Council appointed Consultants to determine the Environmental aspects and to develop the Maintenance Management Proposal for the 8 difficult sites along the Ndlambe coast. Aurecon spent about 2 years discussing this with the local communities and having public meetings. KSDNA has many meeting with Aurecon and I walked the beaches and dunes with them. They discussed many options and studied everything relevant – this is all contained in their approved Report. It is on the basis of the Aurecon

Reports that Environmental Approval of the Maintenance Plan was authorised by DEDEAT, after full discussion with all communities. I was very surprised to find that KOSRA knew nothing about this extensive exercise. Simon Oliver was fully aware of it from me .

DEDEAT approval was expected in April and we had to await the publish of this which was delayed to August 11 due to Covid.

KSDNA have studied these approvals and their proposal will comply with all their requirements.

IN FEB THIS YEAR Robert Rose met with PRDW and CES. RR spent time on the Hout Bay site and it was immediately clear that suitably adapted for Kenton that this was the ideal long term solution that was required. Both consultants were asked to examine this and see if this would work. New aerial surveys of the Kenton Sand Dune were taken and every aspect checked out. The conclusion was that it would be perfect for Kenton in every way. The picture below shows the final plan.



The independent reports from both Aurecon and PRDW are almost identical. So the essential requirements of the DEDEAT approval are:

1. No vegetation should be removed unless it is essential. So opening up DBV, even if it would work, is not an option. Environmental Approval would never be given. The Nature Reserves are very important and Kenton is blessed with a 24 Hectare Nature Reserve.
2. Reprofiling of the Sand Dune and vegetating this with the indigenous plants from the valley will provide 3 hectares of extra Nature Reserve. So a further win win in resolving the Sand Dune and helping Nature.

3. The new frontage of the Sand Dune will be 75 metres from the high water tide mark.
4. A borehole will be sunk and there will be ample water from this for the irrigation of future accumulating sand. The borehole will not be visible nor will the storage tanks for around 30,000 litres which will be built underground.
5. 25 metres will be allotted to manage this sand in the most effective way, in front of the new dune.
6. This sand will be moved by small 2 tonne dump trucks on the new access path starting opposite Lands End Road. This will only be done at the most convenient, non-holiday times – small 7 tonne trucks will deposit the sand on Middle Beach where the boats are launched.
7. A new washroom facility will be located off this path near the beach and within the existing stable Sand Dune.



Estuary Care objected to the Approved Management Plan on 31 August, 2020. There were 4 reasons raised by EC in their objection to DEDEAT which were:

- i) The initial desk top report that I asked PRDW for Chester Wilmot's ideas was superceded after a full study was undertaken by them. The greater volumes of sand would not be sensibly transported through DBV and all this is contained in the report which I have sent to Kevin and many others. Environmental approval will not be forthcoming so we must waste no further time on this, it is just a costly delay, at the Ratepayers' cost.
- ii) Ensuring sand is not returned to Bushman's River is a fundamental objective of the approved proposal. I do not know where Estuary Care believe the proposal contains this. KSDNA have done more to address this than anyone.

iii) This is the same concern EC have misinterpreted the proposal. I repeat no sand will be returned to the river. Please re-examine the proposal.

iv) The only difference between Hout Bay and Kenton is that Kenton will have to move the sand out of the Estuary. The proposal makes this very clear and the method of doing so.

Mr Chairman it is one thing to object but where is EC's alternative proposal. We were told there was one but we have been unable to ascertain what it is. The honest answer is that there is none and never has been. We must move on.

CONCLUSION

The Municipality has an agreed Maintenance Plan which they wish to implement. I have the 44 page construction plan which the Consultants have prepared and have to be approved by DEDEAT and will be since this conforms to all their requirements. All the residents in Lands End Road and the end of Westbourne are expecting the Municipality to start this Maintenance Plan without further delay.

We are not aware of any further problem which Estuary Care may have. Full consultations were carried out by Aurecon, why do they want this to be done again? THIS JUST COSTS THE RATE PAYERS FURTHER MONEY—A GREAT DEAL OF MONEY HAS BEEN SPENT SORTING OUT THE SAND DUNE PROBLEMS—PLEASE CAN WE PUT A STOP TO THIS—LISTEN TO THE PROFESSIONALS AND WE WILL NOT MAKE THE MISTAKES THAT HAVE CAUSED IMMENSE PROBLEMS LIKE IN ST FRANCIS BAY.

Any further costs of delay will be the responsibility of EC. No-one else has objected. The grounds of the EC objection have no substance. This is the advice we have had from both firms of Consultants and other legal advice.

Can we all start working together to improve our Nature Reserve and the outstanding beauty spot that we are blessed with and to create the great beach that is evolving at the Estuary Mouth? This whole area can be made to another most attractive part of Kenton that is evolving as the mouth of the estuary changes.

THANK YOU VERY MUCH